



RIDER TECNICO SALA TOTEM

2011

SONIDO:

P.A.:

Black Sound Orpheo
10 unidades Top 208 MKII
8 subs NH 18
2 etapas NH 6200
3 etapas NH 4200
1 procesador LMS 266

Retardo:

Black Sound Hermes
8 unidades Top 210
2 subs EV- DML 218
amplificación AMCRON

Control:

*Mesa YAMAHA M7CL 48 Ch

Monitores:

10 BS SP 152
1 drumfill (sub 18" , 15" + 1")
2 sidefill BS Titan (sub 18" , 2 x 8" + 2 x 1")
1 sistema in-ear SENNHEISER ew 300 G2
*Mesa YAMAHA LS9 32 Ch

Microfonía:

SHURE: 12 x SM 57, 8 x SM 58, 3 x wireless SLX SM 58
AKG: 2 x D-112, 2 x C-1000, 2 x C-3000
SENNHEISER: 4 x e-604
6 x D.I. activas BEHRINGER
4 x D.I. dobles BEHRINGER

Tarimas:

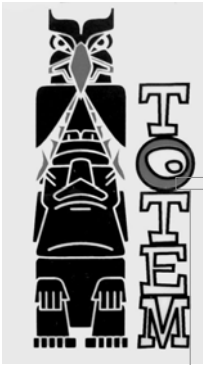
6 tarimas 2 x 1 m de altura variable (tipo Rosco)

ILUMINACIÓN:

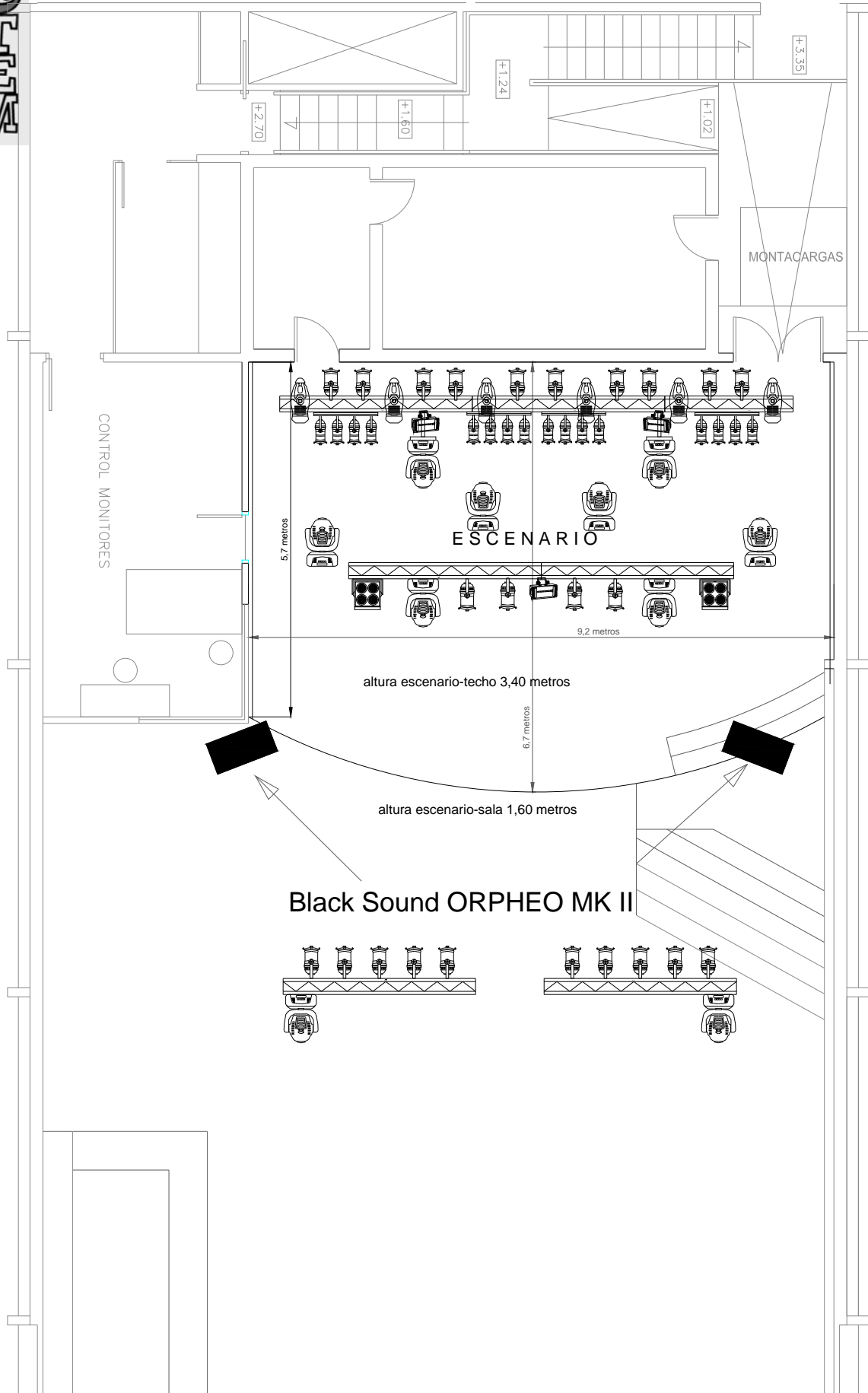
24 PAR 64
2 series de aircraft
2 cegadoras de 4 lámparas
3 strobo DMX 1500W
10 cabezas spot i-solution 575
6 Scanner Pro Light 250 S
2 máquinas de humo Antari Z-1200

Control:

mesa Avolites pearl 2000

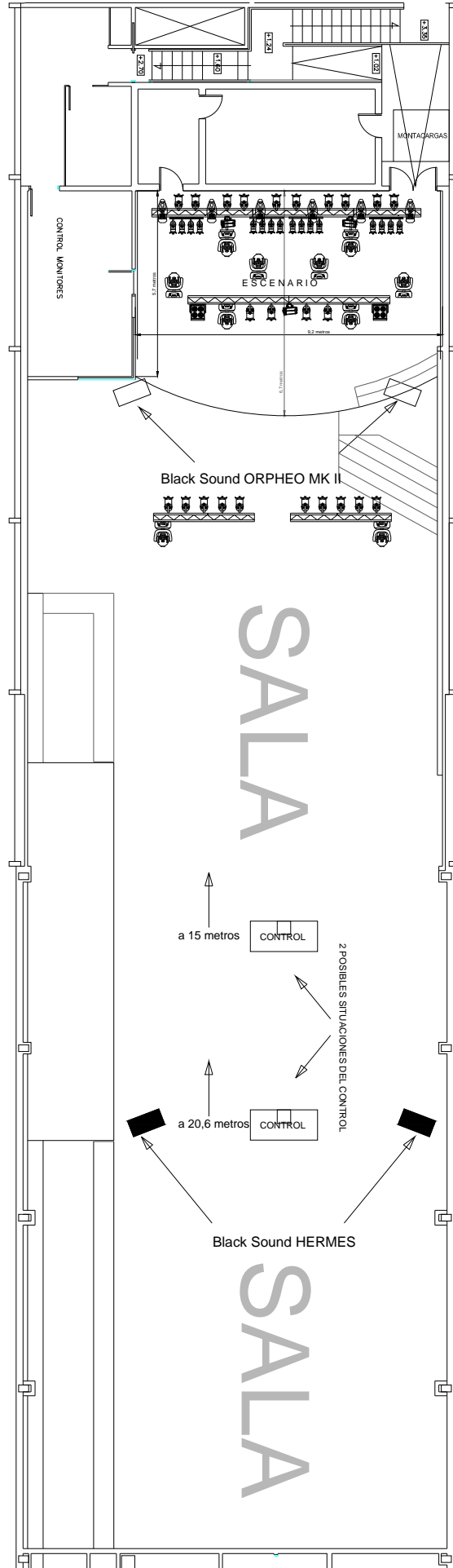


PLANO DE ESCENARIO



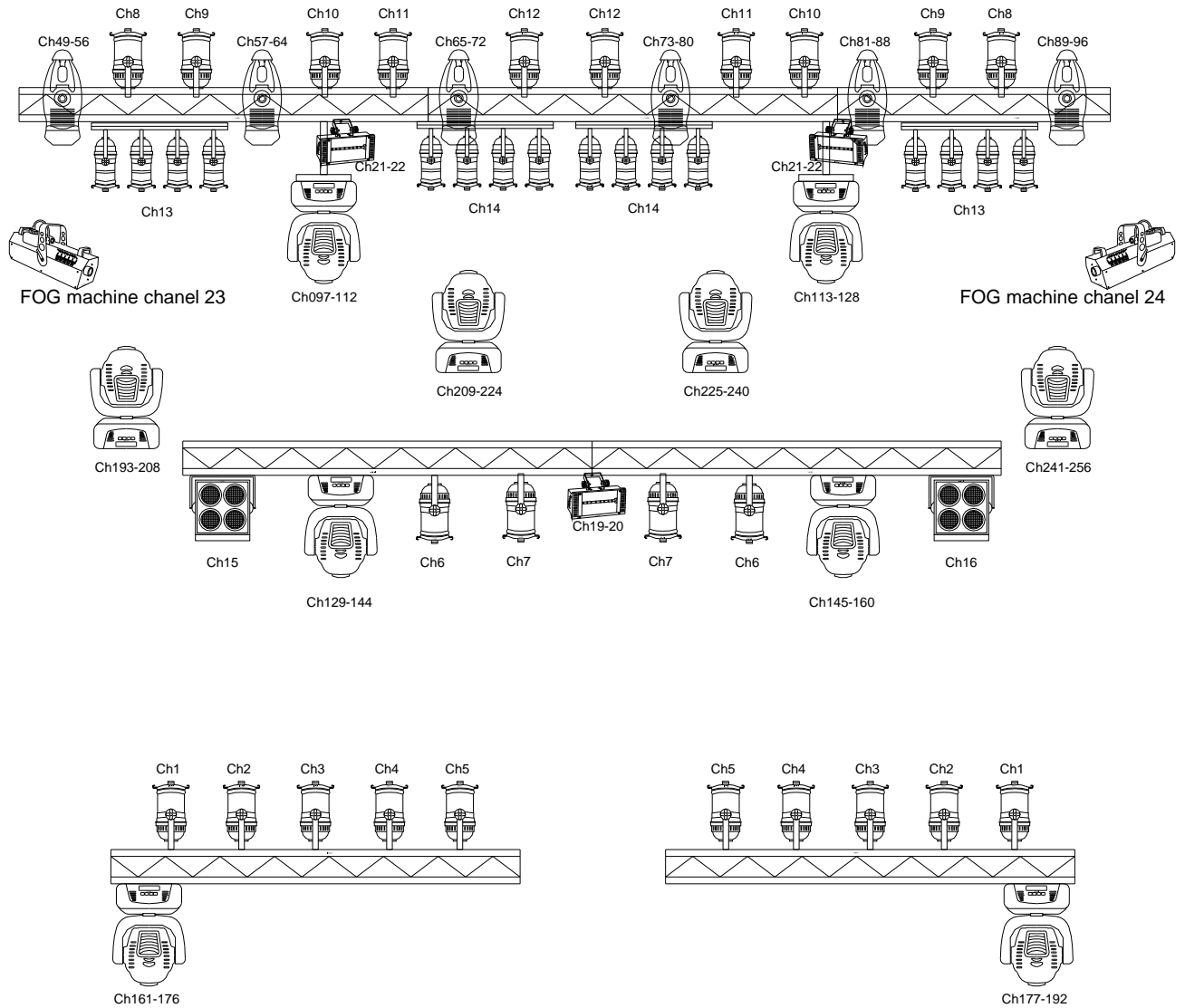


PLANO DE LA SALA





Sala TOTEM plano DMX



575 i-solution Spot

- Canal 1: PAN
- Canal 2: TILT
- Canal 3: PAN & TILT speed limit
- Canal 4: DIMMER
- Canal 5: SHUTTER/SHAKING
- Canal 6: COLOR
- Canal 7: IRIS
- Canal 8: GOBO 1
- Canal 9: GOBO 2
- Canal 10: Rot GOBO 2
- Canal 11: PRISMA
- Canal 12: Rot PRISMA
- Canal 13: FOCUS
- Canal 14: PAN fine
- Canal 15: TILT fine
- Canal 16: RESET/Lamp ON/OFF
(80%) (54%) (92%)



PRO LIGHT SCAN 250

- Canal 1: PAN
- Canal 2: TILT
- Canal 3: COLOR
- Canal 4: GOBO
- Canal 5: GOBO ROTATION
- Canal 6: SHUTTER - DIMMER-(Reset 51%)
- Canal 7: PAN fine
- Canal 8: TILT fine



colores disponibles en Tótem:
 106/26 primary red/bright red
 132 medium blue
 135/158 deep golden amber/deep orange
 119/120 dark blue/deep blue
 139 primary green
 116/115 medium blue-green/peacock blue

Canales DMX libres:
 25 - 48
 257 - 512