

SANTANA 27 FEVER

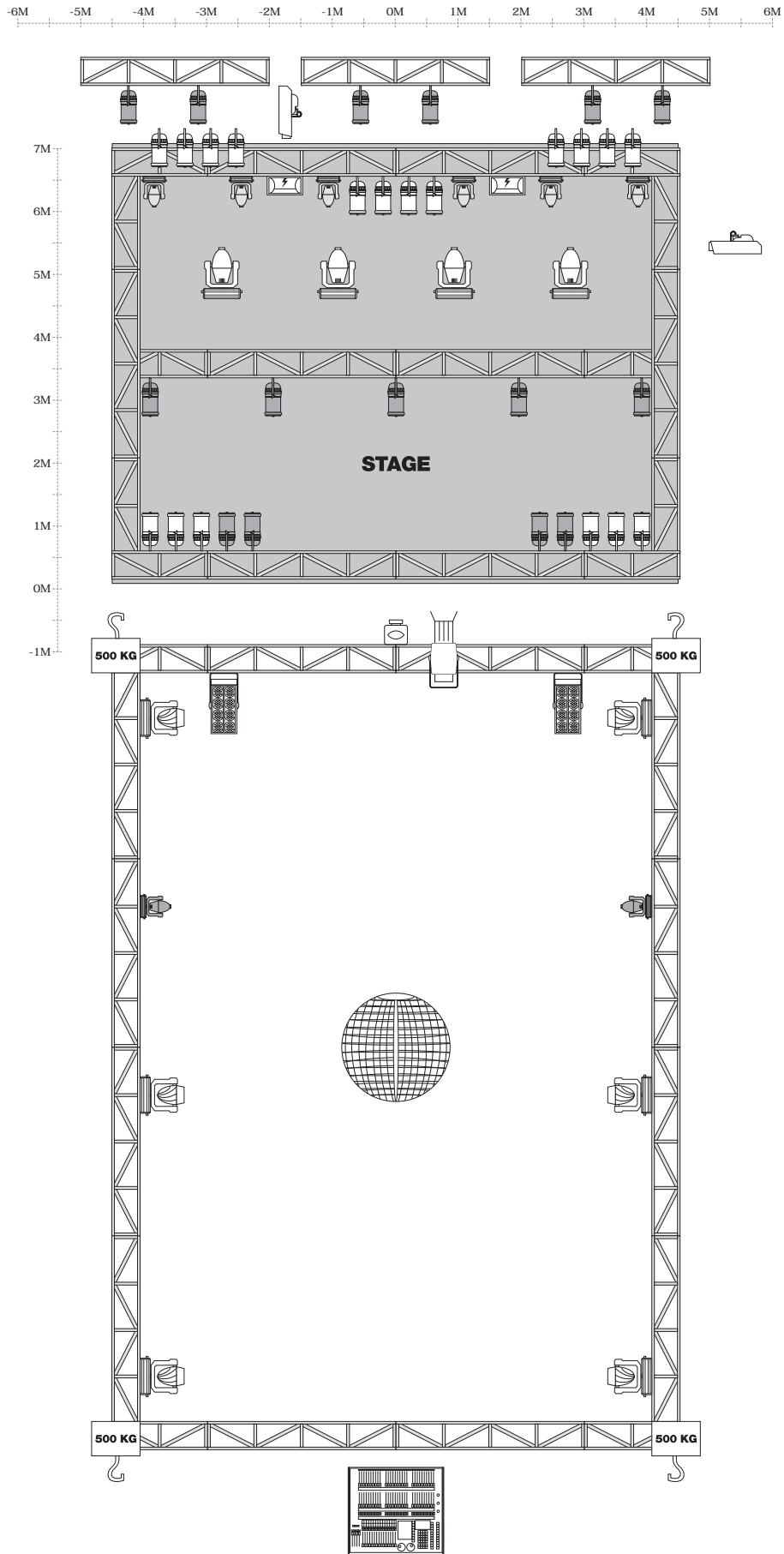
SALA GOLD
RIDER TECNICO

santana27

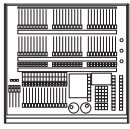
fever



SALA GOLD / PLANO DE ILUMINACION



SALA GOLD / ILUMINACION



Avolite Pearl 2000



Móvil Spot 575 Triton Blue (On Stage/Floor)



Móvil Mini Spot 250 Triton Blue



Móvil Spot SY 250 Triton Blue



Par 64 (Convencional)



Par Led 136 Triton Blue (Wally)



Cabeza Móvil Led 108A-R Triton Blue



Strobe 3000



Proyector Panasonic PT-D 3500E



Recorte 750 25°/50°



Cegadoras



Máquina de Humo Triton Blue

SALA GOLD / SONIDO

P.A.:

Line Array Adamson: 12 x Spektrix, 4 x Spektrix W 15°, 4 x Spektrix Sub (2 x 18"), 2 x T21 Sub (2 x 21")
Amps: 2 x Powersoft K6, 6 x Powersoft K3, 2 x Powersoft K2
Control: 2 x XTA Electronics DC1048

F.O.H.:

Digidesign Venue SC-48
Klark-Teknik 360
Mixer Midas XL3, 40 canales, 8VCA, 16 aux
Manguera de señal 32 canales + 8 envíos
1 cd doble Numark
Intercom

FX:

Yamaha SPX 1000
Yamaha SPX 990
TC Electronic M3000
TC Electronic D2 (delay)

DINAMICA:

2 x BSS DPR 404 (8 comp)
2 x BSS DPR 504 (8 gates)
4 x DBX 166XL (8 comp + gate)

MONITORES:

10 x Adamson Monitor (6 x M12 + 4x M15)
Amp. 5 x Powersoft K2
Sidefill Master Audio MD System (15 ND + 15 BND)
Drumfill Master Audio MA206 + sub 2*15
1 x Yamaha SPX 900
5 x ecu BSS FCS960 (10 canales)
5 x DBX 166XL (10 comps + gate)
Mixer Midas XL3 + 16 envíos

MICROFONIA:

Shure: SM58, SM57, Beta 58, Beta 57, Beta 52, Beta 91, Beta 98Ds, Beta 98HC
Akg: C451, D112, C3000
Senheiser: MD 421, 606
BSS DI
Cableado (Mogami, Neutrik) y pies de micro Beyer Dinamic